



**The Southwater Infant Academy**  
**“Growing, Learning and Succeeding Together”**

# Welcome to Year 1

September 2025

# Settling in to Year 1

- Thank you for helping support your child on making the transition to Green Wing and for encouraging your child's independence to come straight into school. It is always a pleasure each year getting to know new faces and personalities!
- Important messages can be communicated to the staff at drop off, pick up, tapestry or via the office. If it is a matter of urgency or you require a meeting please contact the academy office.

# The Curriculum

- Our curriculum at the Academy has been developed for our children, linking with the Primary Curriculum, and equipping them with the skills required to succeed in our ever-changing world.
- Our topics for the year are...

Autumn	Spring	Summer
Wild and wonderful	Didgeridoos and kangaroos	Once upon a tale
London Calling	This is me	Southwater's past

# Homework

Sent home on a Friday. Please return for the following Thurs.

- This week on Friday your child will be bringing home spellings to learn. Word houses, word buses or rockets will be stuck into their homework books in sets to be practised at home. Teachers will check and mark these books on a weekly basis.
  - Spellings will be checked at the end of each half term.
  - We will give you notice so you can practise at home.
- At the back of your child's homework book will also be the word houses, buses or rockets that they can currently **read**. These have a coloured dot next to them. Please continue to practise any that aren't dotted. We will assess these at the end of term.
  - Thank you in advance!



# Reading



- Your child's reading has been assessed and they have received a green Reading Journal.
- Books will be changed on Thursdays. They will receive either one or two phonics books to read with you at home as well as a sharing book from the wing library.
- Children will be required to place their reading journal into a separate box and it will be checked and initialled by an adult every week.
- Your child's teacher and teaching assistant will listen to your child read often. This could be individually, in a small group or as part of whole class reading sessions.

# Reading

It has been proven that parents are the most important reading role models for children and young people.

Please continue to read daily at home with your child for **at least 10** minutes every day.

There is also an optional section for your children to complete in their green journals should they wish to draw or write about a book they have read.

We hope the children will enjoy taking part in the academies reading challenge this year. This can be done with books from school or home. Please record these in your child's reading journal. Rainbow, bronze, silver and gold awards will be presented to children when they achieve these reading goals.



# Reading

When reading with your child at home please focus on some of these areas:

- Fluency
- Expression
- Discussion of the text and individual words and phrases
- Questions about the story, **including inferred questions.**
- Examples of all these are on the website
- But most importantly enjoy the story together!

# Handwriting

This year in Year 1 we are introducing teaching the children to pre-cursive handwriting. This will benefit them in:

**Improved Fine Motor Skills:** Pre-cursive writing involves continuous, fluid movements that help children develop fine motor skills and hand-eye coordination.

**Prevents Letter Reversals:** It can reduce common letter reversals, such as confusing 'b' and 'd', because the letters are connected and flow naturally.

**Enhanced Reading and Writing Skills:** The connected letters in pre-cursive writing help children understand that sounds are connected to form words, which is a fundamental aspect of reading.

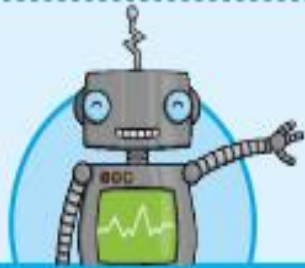
**Ease of Transition:** Pre-cursive writing can make the transition to cursive writing smoother, as children are already familiar with the basic strokes and connections ready for Year 2.

# How to Write Letters

Aa Bb Cc Dd Ee Ff Gg Hh Ii

Jj Kk Ll Mm Nn Oo Pp Qq Rr

Ss Tt Uu Vv Ww Xx Yy Zz



# Mathematics

- We have been working on embedding a Maths Mastery approach across the Academy linked to the NCETM.
- Last year we introduced the mastering number project across the school. This aims to secure firm foundations in the development of good number sense. The aim over time is that children will leave KS1 with fluency in calculation and a confidence and flexibility with number.
- We use many resources such as; Rekenrek, number lines, Multilink and Numicon to help support learning.
- Maths challenges will continue to be sent home every fortnight. They will be sent via Tapestry each fortnight. These aim to support your child's mathematical development.

# Green Wing Assessments

- Children are assessed and their progress monitored regularly by class teachers. This enables us to ensure that all children are making progress and that the next steps in their learning are planned for.
- Children will be assessed by indicating their progress and achievement against Year Group Expectations. The annual Phonics Screening Check for Year 1 will take place in June – more details will follow later in the year.
- We will hold parent consultation evenings in the Autumn and Spring Term and you will receive a report at the end of the Summer Term.

# Tapestry

- It is really supportive of our assessments and allows us to see how children are applying their learning from the Academy to what they do at home.
- We always love to share any experiences and memories or achievements etc from home. We ask that these be shared via Tapestry rather than being sent into classes unless arranged with your child's class teacher.
- You will still be able to see your child's learning on Tapestry, please do comment on the pictures and videos that we upload.
- If you do not have time to comment but have seen the upload please click the 'like' button so we know it has been seen.



# How are children supported in their learning in Green Wing?

- Each class teacher plans and differentiates work to meet the needs of every child. They provide supported and extended activities to enable the children to meet and exceed their potential.
- A range of groups are provided, dependent on the needs of the children. These include: Mathmagicians, support from our ELSA and Thrive Practitioners and small group class interventions to either extend or support where necessary.

# Behaviour

- At The Southwater Infant Academy we believe that positive behaviour management:
  - Is value led
  - Sets high expectations
  - Establishes and maintains clear boundaries
  - Rewards positive behaviour
  - Uses reasonable consequences and restorative justice

The Academy Values are known and respected by the school community and are displayed in each classroom and throughout the academy. They are taught in assemblies and throughout the RSHE programme and are revisited with the children at every opportunity.

## **Rewards**

At Southwater Infants all members of staff recognise, model and celebrate the academy values at all times around the academy through informal and specific praise. Wherever possible, children's best efforts will be celebrated through praise, display and performance.

## **Consequences of inappropriate behaviour and poor choices**

At Southwater Infants we recognise that there are, on occasion, times that mistakes can and will be made. The children are learning their way in the world and will need help and guidance at times. Our aim is to be proactive in supporting children to learn from mistakes and take ownership of their own choices. This may mean accepting a consequence for these actions.

At Southwater Infants we use a restorative approach to resolving and repairing conflict and tackling challenging behaviour. All consequences have a learning outcome and aim to teach children that there are always repercussions for poor choices and inappropriate behaviour. Our goal is to help the children learn to make informed and positive decisions and to choose a better way.

# Pupil Premium



Your child may be eligible for Pupil Premium funding if you receive:

- Income Support
- Income based Jobseeker's Allowance
- Income related Employment and Support Allowance
- Support from National Asylum Support Service (NASS) under part 6 of the Immigration and Asylum Act 1999.
- The Guaranteed element of state Pension Credit
- Child Tax Credit only, provided your annual household income (as assessed by HM Revenue & Customs) does not exceed £16,190. Anyone entitled to Working Tax Credit is not entitled to free meals regardless of income
- Working Tax Credit "Run-on" – (paid for 4 weeks after you stop qualifying for WTC).
- Universal Credit – if you apply on or after 1 April 2018 your household income must be less than £7,400 a year (after tax and not including any benefits you get).
- Pupil Premium is money paid to the academy to support children's learning.
- If your circumstances have changed recently, please complete the online form to check your eligibility. This will mean your child is entitled to items of uniform, and funding for the cost of trips and clubs.
- You can apply for Pupil Premium at any time throughout the year.

# House Keeping

- Remember hot meals are available free for every child.
- Please visit the Easy Lunch website to view the current menus and book your meal choices:
- [www.theeasycompany.co.uk](http://www.theeasycompany.co.uk)
- If your child brings a packed lunch from home, please ensure you only include healthy food in your child's lunchbox, no sweets or chocolate. Please note we are a **nut-free** school.

# House Keeping

- Each class will have 2 PE sessions per week. On these days children need to come to the academy dressed in their PE kit. If the weather is cold, please can children wear jogging bottoms and academy hoodie or fleece. Children need to be wearing trainers. Please either tape ears or remove any earrings on PE days.
- PLEASE NAME EVERYTHING.
- Don't forget that the Academy office opens at 8.30am. If your child is going to be late or absent for any reason, please ring the Academy office after this time so that the class teacher can be informed.
- Please remember that holidays during term time will not be authorised.

# Parent Overviews

- We will upload a 'Parent Overview' to the school website each week under the 'Parent Hub' section which will give you an idea of the learning planned for each area and allow you to support at home.

# Fundraising

- We are always incredibly grateful for any help in providing our children with the best possible resources to enhance their learning experiences.
- We have an Amazon Wish list, items for each year group can be found here <http://amzn.eu/7LFxzGp>
- The PTFA always welcomes help with any fundraising initiatives that they run. Parents and carers can be involved in lots of different ways, so please do get in touch with them if you are able to spare even a few minutes of your time. The funds the PTFA raise are vital in ensuring we can continue to provide resources and experiences to enhance and improve the children's learning.

# Thank you

- Thank you so much for your ongoing support. We look forward to a fantastic year with your children in Green Wing!
- If you are interested in helping out in school with reading, or any other activities please speak to your child's class teacher as we are always eager for any support. We can arrange for you to have a DBS check.
- As always if you have any questions or concerns, please arrange a time to speak with your child's class teacher by phoning the office or arranging a suitable time with the class teacher at the classroom door.