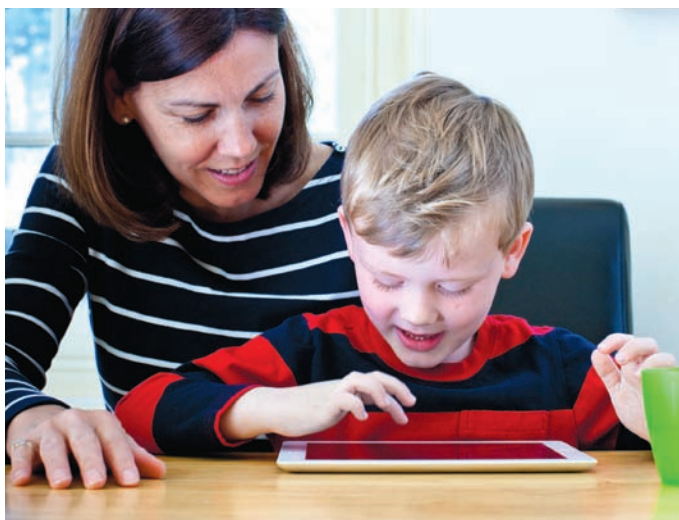




How to... set up YouTube™ Safety Mode™



YouTube Safety Mode enables parents to choose whether to limit content on YouTube™ that might be unsuitable for their children, even though it's not against YouTube's Community Guidelines.

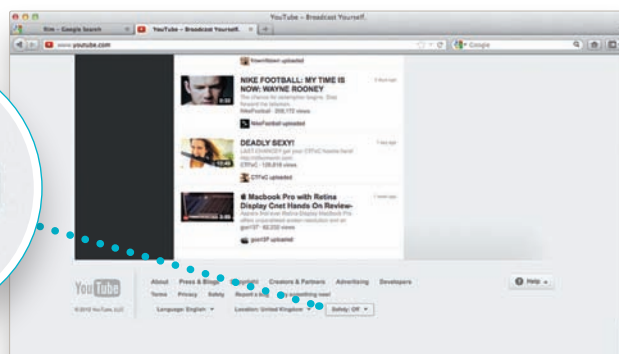
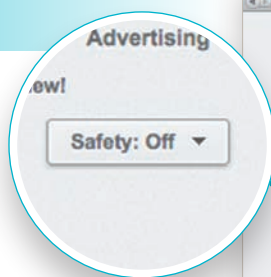
When you opt in to Safety Mode, videos with mature content or that have been age restricted will not show up in video search, related videos, playlists, shows and movies.



Step 1

Go to safety preferences

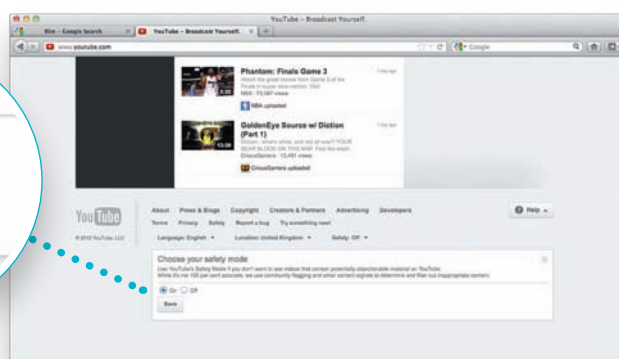
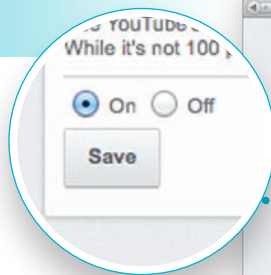
Simply go to the bottom of any page on YouTube™ and click the grey 'Safety' button to open the preference setting.



Step 2

Turn Safety Mode 'on' or 'off'

Choose to turn Safety Mode 'on' or 'off' and click on Save. If you turn it on and you have a YouTube™/Google account, you can sign in to your account and lock Safety Mode so that no-one else can change the settings whenever YouTube™ is accessed from that browser.



Please note: while no filter is 100% accurate, YouTube™ uses community flagging, hides objectionable comments and uses pornographic image detection to identify and hide inappropriate content. Safety Mode on YouTube™ does not remove content from the site but rather keeps it off the page for users who opt in.



www.youtube.com